

LAKE SUPERIOR
COMMUNITY HEALTH CENTER

Improving access to quality health care for all



[LSCHC.ORG](https://lschc.org)

Dear Supporters,

The end of year report is an opportunity to reflect on the history and current relevancy of community health centers, including that of Lake Superior Community Health Center (LSCHC). The nation’s 1,400 community health centers serve 28 million patients at 8,000 sites. Minnesota’s and Wisconsin’s 34 centers care for 500,000 people, many of whom are publicly insured, underinsured, or uninsured. Here in the Twin Ports, LSCHC proudly serves more than 10,000 patients at clinic sites in Duluth and Superior. LSCHC offers primary medical, dental, behavioral health, health insurance navigation, and substance abuse services.

Community health centers are referred to as the nation’s “safety net” because we serve the underserved. But we are so much more. We are innovators in providing integrated care. This means you may find a Lake Superior Community Health Center behavioral health clinician helping a patient with extreme dental anxiety or a substance-abuse counselor and medical provider jointly caring for a patient with opioid addiction. The integrated model of care allows us to treat the whole person.

Community health centers forge creative partnerships like the one between LSCHC and the Duluth Children’s Museum. LSCHC received grant funding to purchase annual memberships to the Duluth Children’s Museum so that our providers can “prescribe” memberships for patients who may benefit from family-centered play. We call it “Prescription for Play.”

Community health centers recognize that factors like poverty, discrimination, trauma, and isolation impact health as much as access to quality health care, and so LSCHC is launching a trauma-informed training and assessment program. We also are consulting with experts to ensure patients who identify as LGBTQ are provided with inclusive and responsive care.

Community health center providers stay abreast of best practices to help patients reduce the negative impacts of chronic diseases such as diabetes, heart disease, hypertension, and depression. In fact, the National Association of Community Health Centers found that community health centers performed better on ambulatory quality measures like diabetes management and hypertension control than private-practice groups, despite treating patients that are more medically complex.

The national association also found that community health centers annually save our nation \$24 billion in health care costs. To support this incredible work, community health centers receive federal grant funding, and LSCHC’s federal grant comprises approximately 18 percent of our annual revenue and support. Our staff and board continue to encourage Congress to recognize the benefits community health centers have provided over the past five decades by passing a long-term spending bill that would secure our viability.

This year, the theme for National Health Center Week was “rooted in community,” which aptly describes Lake Superior Community Health Center. Since 1972, we have been growing and expanding to meet community needs. We proudly partner with other community health centers through our state associations and through the Breakwater Health Network. We also partner with community members, including St. Luke’s, Essentia Health, Generations Health Care Initiatives, the Human Development Center, the American Cancer Society, the Ordean Foundation, the Cities of Duluth and Superior, the Superior Police Department, the Wisconsin and Minnesota Departments of Health, the Head of the Lakes United Way, our schools, and county public health departments.

We’re proud to have served the Twin Ports for nearly 50 years, and we look forward to meeting the community’s needs for years to come.

Sincerely,

DAYLE PATTERSON, CEO
Lake Superior Community Health Center



DIANE HOLLIDAY-WELSH, CHAIR
Lake Superior Community Health Center Board of Directors



WHAT'S NEW IN 2019

- EXPANDED BEHAVIORAL HEALTH program in MN
- Robust SUBSTANCE USE DISORDER PROGRAM in WI
- Behavioral health services now offered IN 10 SCHOOLS IN DOUGLAS COUNTY
- MEDICATION MANAGEMENT AND OTHER MEDICAL SERVICES now offered by a psychiatric nurse practitioner in MN
- SATURDAY DENTAL APPOINTMENTS now offered for emergency oral health care visits

COMMUNITY PARTNERSHIPS



IN THE SPOTLIGHT PRESCRIPTIONS FOR PLAY

DULUTH CHILDREN’S MUSEUM AND LSCHC TEAM UP

A patient engagement grant from Breakwater Health Network has allowed us to purchase annual memberships to the Duluth Children’s Museum. Our providers “prescribe” memberships for patients who may benefit from family-centered play. We know play is an important part of childhood development and can help reduce the impacts of adverse childhood experiences and trauma. We appreciate the collaboration with the Duluth Children’s Museum and the grant support — this is just another example of our attempt to actively meet our mission, improving access to quality health care for all.

BY THE NUMBERS

LAKE SUPERIOR COMMUNITY HEALTH CENTER

REVENUE	EXPENSES
PATIENT SERVICE REVENUE	PROGRAM SERVICES
CONTRIBUTIONS	FUNDRAISING
PUBLIC SUPPORT	MANAGEMENT & GENERAL

TOTAL REVENUE \$8,796,380

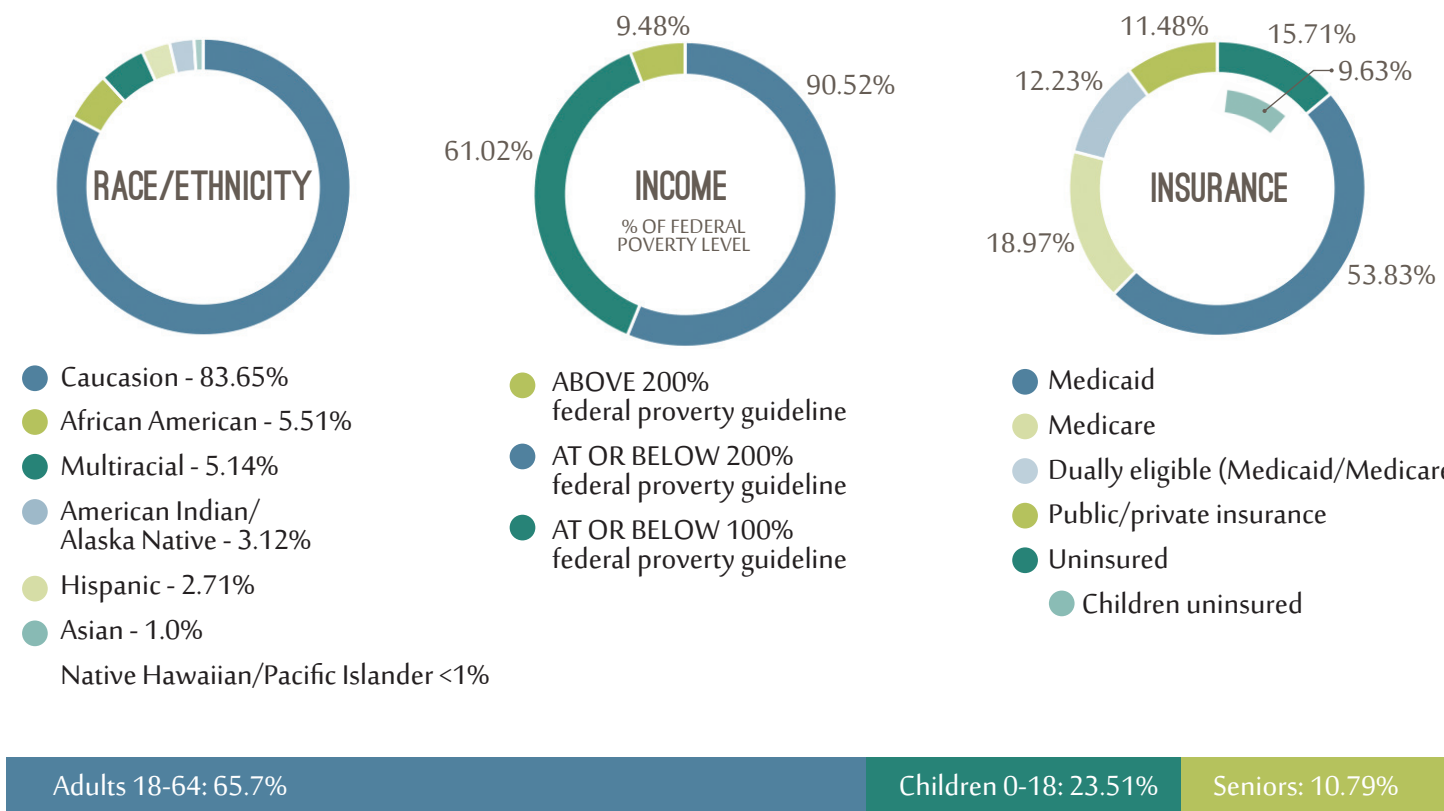
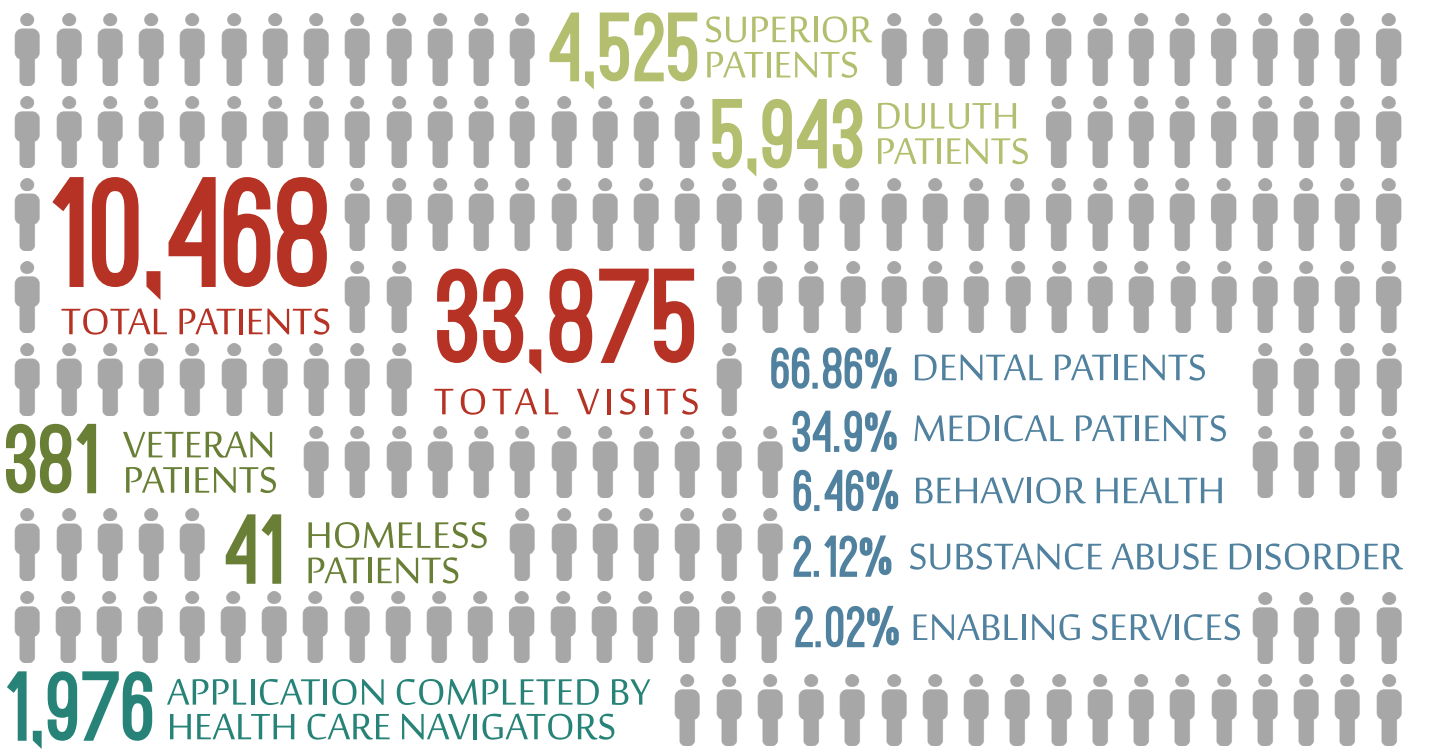
TOTAL EXPENSES \$8,642,497

I WASN'T JUST A MEDICAL NUMBER.
FOR THAT SHORT PERIOD OF TIME,
I WAS SOMEONE
WHO NEEDED THE HELP SHE PROVIDED.

SERVICES

- MEDICAL
- DENTAL
- BEHAVIORAL HEALTH
- SUBSTANCE USE DISORDER
- HEALTH INSURANCE NAVIGATION

OUR PATIENTS



OUR DONORS

We are grateful for the generous support of our donors and appreciate all levels of giving.

LOCAL AND STATE GOVERNMENTS, FOUNDATIONS, CIVIC ORGANIZATIONS, AND BUSINESSES*

- State of Wisconsin

State of MN

City of Duluth

City of Superior

American Cancer Society

St. Luke's Hospital

Generations Health Care Initiative

Ordean Foundation

Head of the Lakes United Way

Health Partners
- Lions Club

Fraternal Order of Eagles, Superior

Benedictine Sisters

Superior High School DECA student group

Northern MN Network

St Croix Inn

Chiropractic Health Center

Whole Foods Coop

Duluth Lions Club

Benedictine Sisters of St. Scholastica Monastery

*Reflects cash donations

INDIVIDUAL DONORS

- Bob Dow

Dayle Patterson

Dr. Emily Anderson

Anonymous Donor

Betty Coyle, C/O Fraternal Order of Eagles

Darlene and Phil Gerber

Mark Franklin

Michael and Jennifer Conboy

Elaine Hill

Lyle and Terrie Shannon

Muriel Lehman

Beverly and John Hart

Merlyn and Mary Bowker

George and Elaine Ahlgren

Beverly Haugejorde

Glen E. Kinney, JR. and Maxine A. Belmore

Lois Witzig

Ivanell Monson

Mary and Ronald Sundell

Dorothy and Millard Knudson

- Jeanette Hall

Leila Jindeel

Mary Jensen

Roger Risley and Mary Rapps

Esther Gieschen

Thomas Seidelmann

Dorothy Langager

Michelle Nelson

Michele Miller

Thomas and Karen Van Hale

David Blomberg

Gordon Levine

Sarah Sneve

Marge Fraser

Dr. Thomas and Julie Seidelmann

James and Judith Stewart

Neal and Iola Vanstrom

Adam Wennersten

Joe Everett

THE SPIRIT OF GIVING

IN THE SPOTLIGHT DR. OASE



Dr. Richard Oase, a valued member of LSCHC's dental team, volunteered his time and dental skills on a trip to rural Kenya in January 2019. Along with a team of other volunteer health professionals, they provided free dental services to 230 people in the village. As Dr. Oase observed, "you are profoundly affected by how little material items the people have, and how genuinely happy they are. It is a real comment on how we live our lives and what is most important." Thank you Dr. Oase for your commitment to service abroad as well as right here at LSCHC.

IN THE SPOTLIGHT GENERATIONS HEALTH CARE INITIATIVES



Generations Health Care Initiatives is a long-standing supporter of LSCHC. In September, Generations' founding father, William "Buzz" Palmer, ended his final term on the board of directors. As a way of honoring his legacy, Generations donated in his honor to the dental clinic at Lake Superior Community Health Center. This generous donation will be used to stock the shelves of a dental patient pantry. Non-perishable food items, cleaning supplies, and hygiene products will be available for patients to access in the pantry. The pantry is one example of how LSCHC is working to address social determinants of health such as food insecurity, which we know can have a major impact on patients' overall well-being.

ROOTED IN COMMUNITY

2ND ANNUAL NATIONAL HEALTH CENTER WEEK CELEBRATION



We hosted our 2nd annual celebration of National Health Center Week on August 8th. The block party was another success and is sure to become a summer tradition! This celebration is an opportunity to reflect on the integral role of community health centers, to interact with our patients, community partners, funders, legislators, friends, family, and neighbors. Thank you to all who attended, to the musical talents of Split-Rox, to the generous donations from Super One Foods and Second Harvest Northern Lakes Food Bank, and to all those who donated to our free community yard sale.

WE ARE ALREADY LOOKING FORWARD TO CELEBRATING WITH YOU ALL IN 2020.

DULUTH

MEDICAL, DENTAL & BEHAVIORAL
4325 GRAND AVENUE
(218) 722. 1497

SUPERIOR

MEDICAL, DENTAL & BEHAVIORAL
3600 TOWER AVENUE
(715) 392. 1955

SUPERIOR

SUBSTANCE ABUSE & BEHAVIORAL
1500 N 34TH ST
(715) 395. 5380

LSCHC.ORG